



BLACK MOUNTAIN BARRIO SERIES

HOUSING INFORMATION | UNRESTRICTED INCOME PROGRAM

TOKA UIP PRICING GUIDES

Designed by Travois Architecture and is made with block construction. The price per square footage will be \$136.00. The interest that will be charged is 2% amortized over 30 years.

THESE MODEL PRICES ARE AS FOLLOWS:

MODEL #	LA SQ FT	CONSTRUCTION	BD	BA	PRICE	MONTHLY
T3-1364	1364	WOOD	3	2	\$185,584.00	\$685.66
T3-1648	1648	WOOD	4	2	\$224,128.00	\$828.42

BASIC LAND REQUIREMENTS



Distance from a Water Main: 500 ft

Distance from Electric: 1,000 ft

Distance from a Sewer Main: 500 ft

Septic Systems: Site Check Required

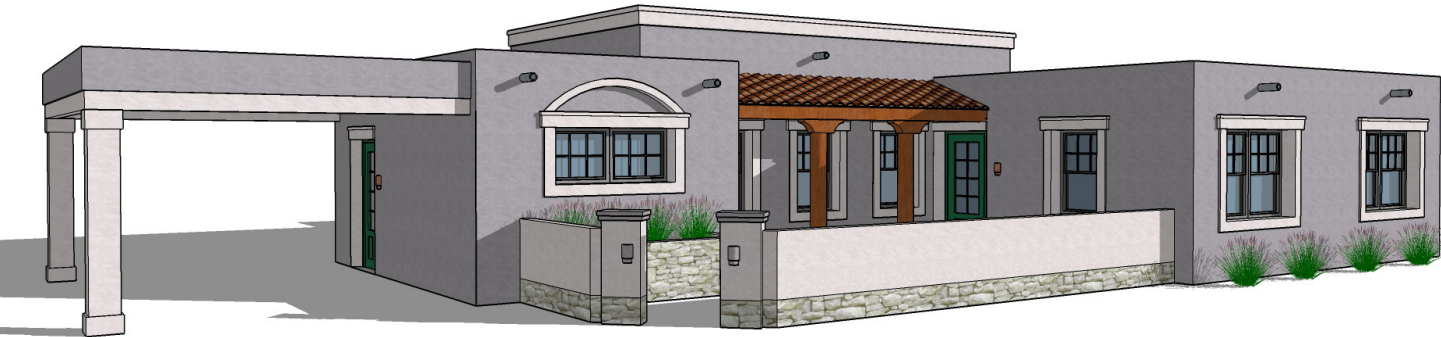
Distance from Fiber Optics: Site Check Required

IMPORTANT PHONE NUMBERS:

TOUA WATER/SEWER (520) 383-5831

TOUA ELECTRIC (520) 383-5821

TOUA (520) 383-2236



FLOOR PLAN 2 - MODEL T3-1648

54'3" WIDE | 46' DEEP | 1648 SQ. FT. | 4 BEDS | 2 BATHS | 1 CAR

