



EAGLE BA'AG SERIES

HOUSING INFORMATION | UNRESTRICTED INCOME PROGRAM

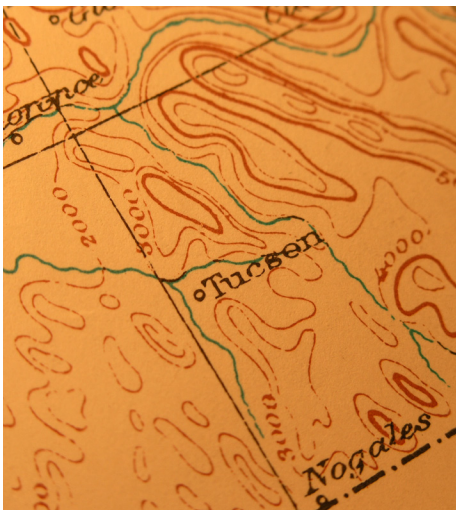
TOKA UIP PRICING GUIDES

Designed by Anderson Architecture Studios and made with block construction. Price per square footage will be \$168.00. The interest that will be charged is 2% amortized over 30 years. **For this series of units, TOKA will not allow the same 30% rule as the other models.**

THESE MODEL PRICES ARE AS FOLLOWS:

| MODEL # | LA SQ FT | CONSTRUCTION | BD | BA | PRICE | MONTHLY |
|---------|----------|--------------|-----|----|--------------|------------|
| 1905 | 1905 | BLOCK | 3/4 | 2 | \$320,040.00 | \$1,182.93 |
| 2167 | 2167 | BLOCK | 4 | 2 | \$364,056.00 | \$1,345.62 |

BASIC LAND REQUIREMENTS



Distance from a Water Main: 500 ft

Distance from Electric: 1,000 ft

Distance from a Sewer Main: 500 ft

Septic Systems: Site Check Required

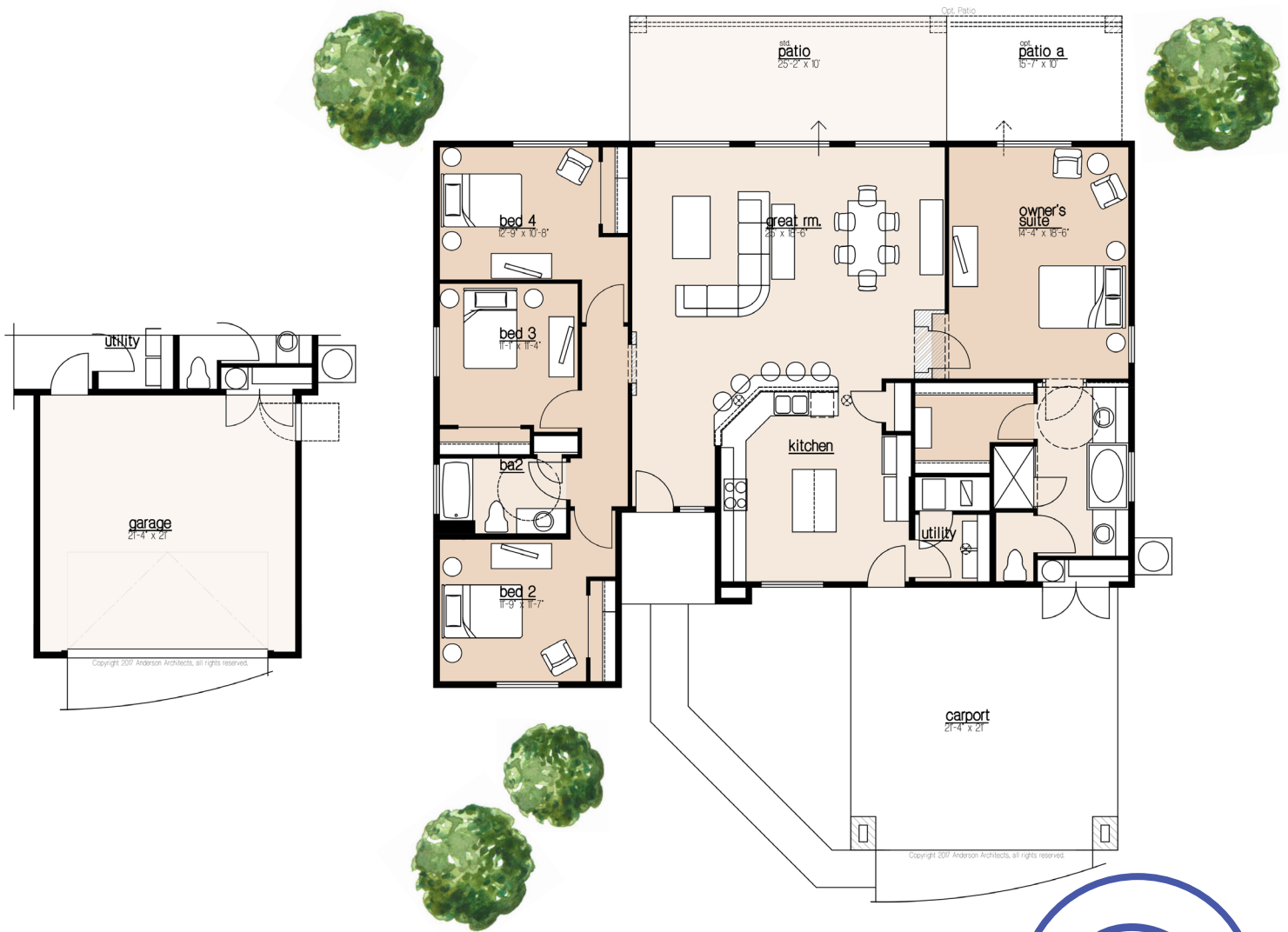
Distance from Fiber Optics: Site Check Required

IMPORTANT PHONE NUMBERS:

TOUA WATER/SEWER (520) 383-5831

TOUA ELECTRIC (520) 383-5821

TOUA (520) 383-2236



Rendering and floorplans designed by Anderson Architects



FLOOR PLAN 2 - MODEL 2167 (57)

57'-4" WIDE | 56'-8" + DEEP | 2167 SQ. FT. | 4 BEDS | 2 BATHS | 2 CARS

